



# EOS Selection

## Sauna heater for domestic and commercial saunas. Floor-standing model.

High-quality sauna heater with a distinctive puristic, straight-lined design for dry Finnish sauna operation.

Configure your „dream heater“ to match your individual sauna design and your preferences.

### Your benefits and advantages:

- Spec the design up to your liking in a few simple steps (see QR code below).
- Outer shell and top cover available in polished stainless steel or with anthracite, matt black or matt white finish.
- Stylish guard rail crafted of solid Abachi or walnut can be added as an option to complement the heater design.
- Uniform appearance on all sides – great for installation in front of glass or central position.
- Durable stainless steel construction. Perfectly balanced rock store size and air convection performance. Stone compartment separated from the heating elements.
- Made in Germany quality by EOS.

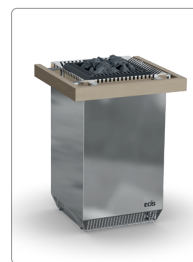
### Specifications:

Exterior:	Stainless steel, polished or with powder-coated finish
Inner shell / rock store:	Stainless steel
Power range:	7.5 kW   9.0 kW   10.0 kW   12.0 kW
Power supply:	400 V 3N ~ 50 Hz
Rock store volume:	approx. 35 - 40 kg (stones optional)
Size (H x W x D):	75 x 42 x 42 cm (adjustable feet)
Installation:	Floor-standing



- Exterior: matt black
- Top cover: matt white
- Vulcanite stones
- Guard rail, Abachi wood (4-sided)

### Design examples:



- Exterior: stainless steel
- Top cover: anthracite
- Diabase stones
- Guard rail, Abachi wood (3-sided)



- Exterior: anthracite
- Top cover: stainless steel
- Diabase stones
- Guard rail, walnut wood (3-sided)



- Exterior: matt white
- Top cover: matt black
- White quartz stones
- Guard rail, walnut wood (4-sided)

Further information and references can be found at:

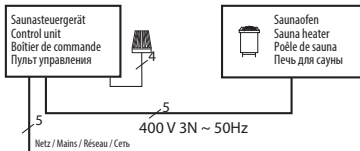
[www.eos-sauna.com/en/selection](http://www.eos-sauna.com/en/selection)



CE EAC UK CA IPx4 Made in Germany

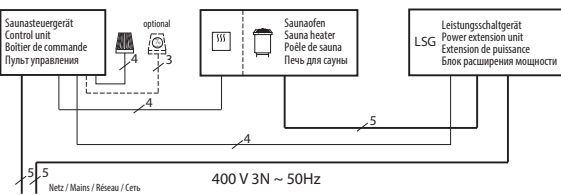
## Connection overview

### 7,5 + 9,0 kW + \*\*10,0 kW



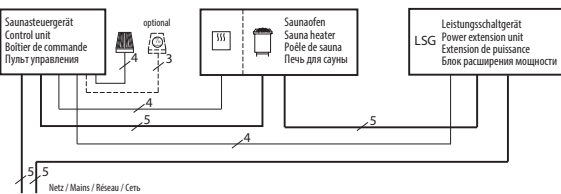
10,0 kW only for Compact D series

### 10,0 kW

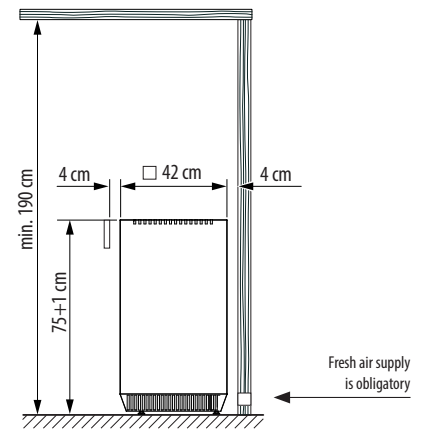
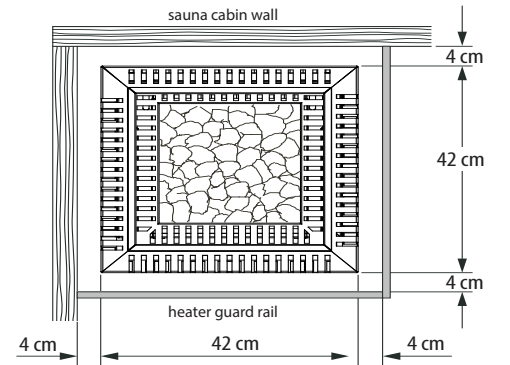


Only for EmoTec D series  
EmoStyle D / Hi series  
EmoTouch 3 series

### 12,0 kW



## Minimum clearances



## Technical specifications

Power output	Connection mains - control unit	Connection control unit - heater	Connection mains - LSG	Connection LSG - heater	Connection control unit - LSG unit
7.5 kW	5 x 2,5 mm <sup>2</sup>	5 x 1,5 mm <sup>2</sup>	--	--	--
9.0 kW					
10.0 kW			5 x 2,5 mm <sup>2</sup>	5 x 1,5 mm <sup>2</sup>	4 x 1,5 mm <sup>2</sup>
12.0 kW					

All cross sections of a line are minimum diameters in mm<sup>2</sup> (copper wire).

## Spare heating elements

Description	Item no.
For 7.5 kW (5 x 1500W)	2000 8085
For 9.0 kW (6 x 1500 W)	2000 8085
For 10.0 kW (6 x 1666 W)	2001 7026
For 12.0 kW (6 x 2000 W)	2000 8086

Power output	Electrical connection	Fuse protection control unit	Fuse protection LSG unit	Dimensions H/W/D, in cm	For sauna cabin size*	Min. size air inlet and outlet	Weight without rocks	Stone filling	Power extension required	Suitable control units
7.5 kW	400 V 3N ~ 50 Hz	3 x 16 A	--	75 / 42 / 42	7 - 10 m <sup>3</sup>	35 x 5 cm	28 kg	approx. 35-40 kg	no	Compact D series EmoTec D series EmoStyle D/Hi series EmoTouch 3 series
9.0 kW					9 - 14 m <sup>3</sup>	35 x 6 cm				
10.0 kW			11 - 15 m <sup>3</sup>		35 x 6 cm	**no / LSG 10				
12.0 kW			14 - 18 m <sup>3</sup>		35 x 7 cm	LSG 10				

\*Depending on the used building materials. Recommendation for normally insulated indoor saunas without large glass surfaces

\*\*without LSG unit, only for EOS Compact series control units