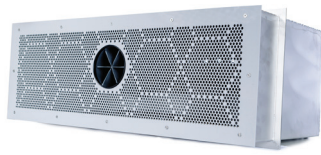
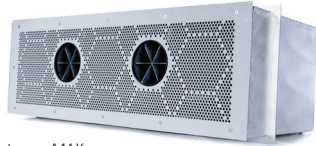


EVastream | Recessed Mounted Counter-Current Swimming Machine



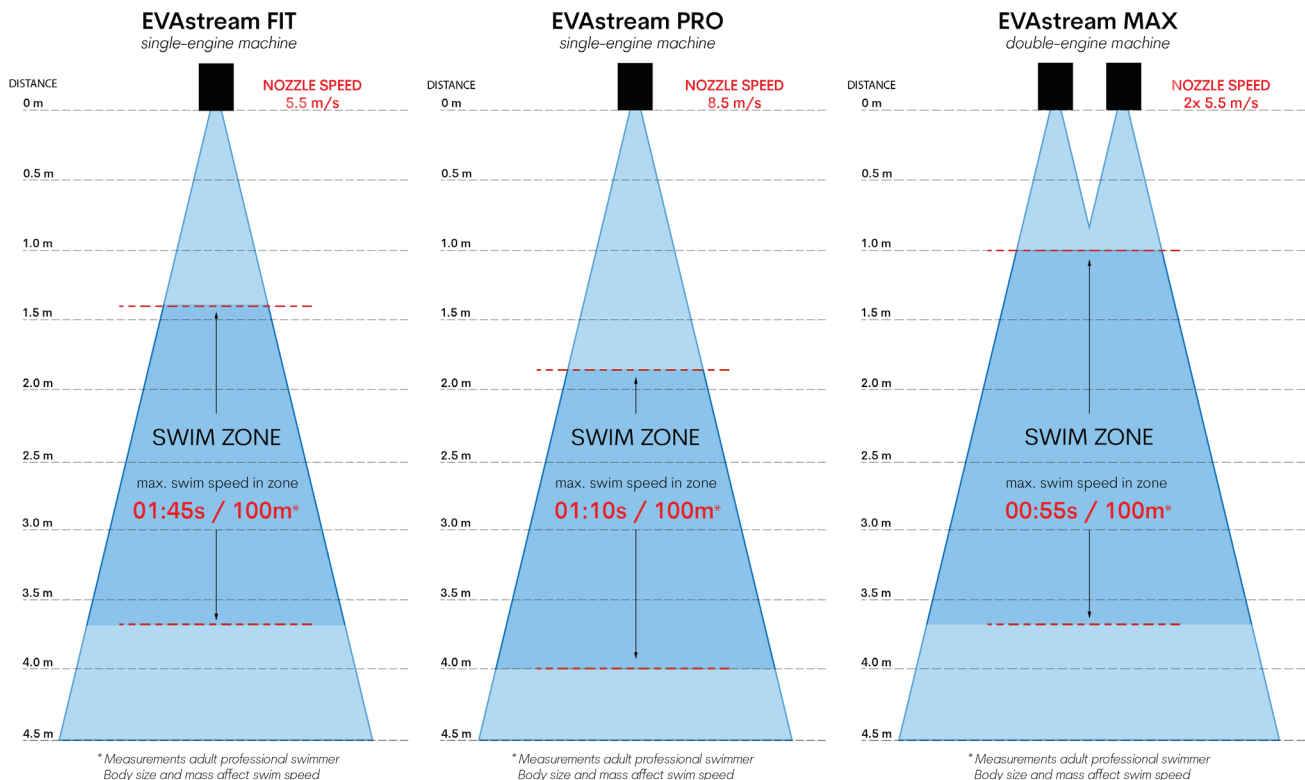
EVastream FIT/PRO



EVastream MAX

EVastream is the most compact and the most powerful counter-current swimming machine on the market. With the EVastream you can enjoy swimming & exercising in your pool, all year round.

	EVastream FIT	EVastream PRO	EVastream MAX
Configuration machine	Single-engine machine	Single-engine machine	Double-engine machine
Minimum pool dimensions	L: 4.50 m W: 3.00 m	L: 5.50 m W: 3.00 m	L: 4.50 m W: 3.00 m
Water temperature	5°C to 35°C	5°C to 35°C	5°C to 35°C
IP Rating	IPX	IPX	IPX
Cable type	3x 1x16mm ²	3x 1x16mm ²	6x 1x16mm ²
Cable length	Standard cable length 5m. Extend with 3x1x25mm ² (FIT/PRO) / 6x1x25mm ² (MAX) cable. Max. length 25m.		
Safety standards & measures	EVastream was built for speed and safety. Safety measures were taken to ensure safety of fingers, toes and also hair. EVastream complies to safety standards DIN EN16582-1/2/3, EN16713-2 (residential pools) and EN13451-1/3 (commercial pools).		
Warranty	2 years factory warranty	2 years factory warranty	2 years factory warranty
Recommended use	Recreational swimmer	Experienced swimmer	Maximum swimming experience. Most powerful EVastream, largest swim zone
Flow rate capacity	Max. 225 m ³ /h (adjustable flow)	Max. 350 m ³ /h (adjustable flow)	Max. 2x 225 m ³ /h (adjustable flow)
Max. water speed at outlet	5.5 m/s	8.5 m/s	2x 5.5 m/s
Max. swim speed in swim zone	01:45 seconds per 100m	01:10 seconds per 100m	00:55 seconds per 100m



EVastream | Recessed Mounted

Counter-Current Swimming Machine



NICHE

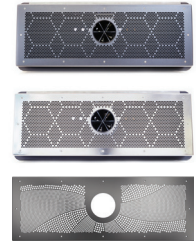
W: 950mm x H: 330mm x D: 450mm - details in manual!

- Niche Wide Polypropylene (WDX1-A01-PP)
- Niche Wide Polyethylene (WDX1-A01-PE)
- Niche Wide Stainless Steel 316 (WDX1-A01-SS)

FRONT PLATE

W: 960mm x H: 340mm x D: 18mm - details in manual!

- Front Plate Wide Hexagone ABS Anthracite (WDX1-A02-ABS-HEX)
- Front Plate Wide Hexagone ABS White (WDX1-A02-ABS-HEX01)
- Front Plate Wide Hexagone Stainless Steel 316 (WDX1-A02-SS-HEX)
- Front Plate Wide Wave Stainless Steel 316 (WDX1-A02-SS-WAVE)



AC/DC POWER SUPPLY

		EVastream FIT	EVastream PRO	EVastream MAX
Input	Voltage range	180-264Vac 254-370Vdc	180-264Vac 254-370Vdc	180-264Vac 254-370Vdc
	Frequency range	47-63Hz	47-63Hz	47-63Hz
	AC current (230VAC)	5.5A	9A	11A
	Nominal power	1200VA	2000VA	2400VA
	Power factor (type)	>0.9	>0.9	>0.9
Output	DC bus voltage (stabilized)	26Vdc	28Vdc	28Vdc
	DC bus current	46A	71A	86A
Protections	Short circuit, overload, over voltage, over temperature			
Safety standards	SELV, UL62368-1, CSA C22.2 No. 62368-1, TUV EN62368-1 + A11, EAC TP TC 004, BSMI CNS14336-1 approved, EN55032 (CISPR32) Class A/B, EN61000-3-2/3, EN61000-4-2/3/4/5/6/8/11, EN55024, EN61204-3, EN61000-6-2, BSMI CNS13438.			

MOTOR CONTROL UNIT

		EVastream FIT	EVastream PRO	EVastream MAX
Input	Control input	DMX512	DMX512	DMX512
Output	Motor PMSM 3xDC	RPM range 10-100%	RPM range 10-100%	RPM range 10-100%
Housing	Dimensions	660 x 185 x 115 mm (cable gland on bottom)	660 x 185 x 115 mm (cable gland on bottom)	660 x 220 x 115 mm (cable gland on bottom)
	IP rating	IP20	IP20	IP20
	Working temperature	Max. 32°C, mount in a dry and condensation-free area		
	Safety measures	EVA Torque control, Voltage/current control, Mosfet temperature control		

CONTROL OPTIONS

Control inside the pool

- 1x Piezo switch (push = speed up 10%)
 - 2x Piezo switch (on/off and speed +/-)
 - 3x Piezo switch
- Basic setting* (on/off, speed +/-, underwater lights dimming & switch colour)
Advanced setting (on/off, speed +/-, user selection for 3 preset training sessions, underwater lights dimming & switch colour)

Control outside the pool

- DMX controller basic EC1
 - DMX controller advanced EVO
- The advanced DMX EVO controller contains preset swim training programs:
- Basic build-up program with 10 training sessions (interval, sprint and endurance)
 - Sprint program with 5 sprint training sessions
 - Endurance program with 5 endurance training sessions
- Synchronize EVA's RGBW underwater lights for the full training experience. The underwater lights provide smart guidance and motivation throughout each training session!**



DMX controller basic EC1



DMX controller advanced EVO



Piezo switches